

# JONES - PARCEL "C"

0683-002

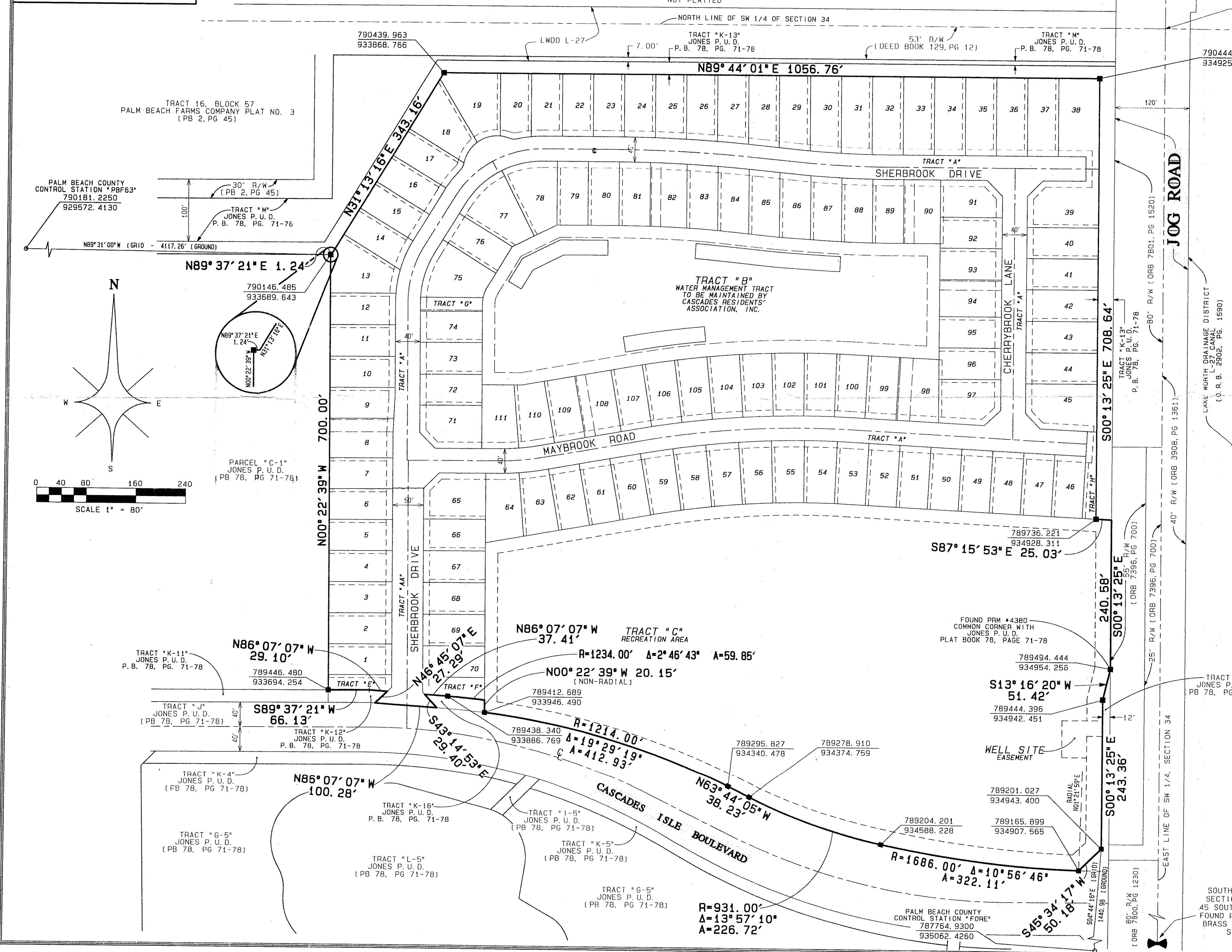
# 167

BEING A REPLAT OF PARCEL "C", JONES P.U.D. AS RECORDED IN PLAT BOOK 78, PAGES 71 THROUGH 78 OF THE PUBLIC RECORDS OF PALM BEACH COUNTY, FLORIDA SITUATE IN SECTIONS 33 AND 34, TOWNSHIP 45 SOUTH, RANGE 42 EAST, PALM BEACH COUNTY, FLORIDA

SHEET 3 OF 5

NOVEMBER 1996

STATE OF FLORIDA }  
 COUNTY OF PALM BEACH } SS  
 THIS PLAT WAS FILED FOR  
 RECORD AT \_\_\_\_\_ DAY OF  
 THIS \_\_\_\_\_ AD. 1996 AND  
 DULY RECORDED IN PLAT BOOK  
 \_\_\_\_\_ ON PAGES \_\_\_\_\_ AND  
 \_\_\_\_\_  
 DOROTHY H. WILKEN, CLERK  
 CIRCUIT COURT  
 BY: \_\_\_\_\_ DC



*Pet 95-19*  
*No Schools Restrictive Covenant*  
*5/3/3K*  
*ROADS { MF 990° PER UNIT*  
*{ SF 1320° PER UNIT*

*78-167*

*0683-002*

- LEGEND:
- Δ = CENTRAL ANGLE/Delta
  - CL = CENTERLINE
  - CH = CHORD
  - DB = DEED BOOK
  - DE = DRAINAGE EASEMENT
  - F.P. & L. = FLORIDA POWER AND LIGHT COMPANY
  - FL = ARC LENGTH
  - LA = LIMITED ACCESS EASEMENT
  - LA.M.E. = LAKE MAINTENANCE ACCESS EASEMENT
  - LA.M.E. = LAKE MAINTENANCE EASEMENT
  - L.W.D. = LAKE WORTH DRAINAGE DISTRICT
  - N.R. = NON-RADIAL
  - N.T.S. = NOT TO SCALE
  - O.P.P. = OFFICIAL RECORDS BOOK
  - P.B. = PLAT BOOK
  - P.G. = PAGE
  - P.O.B. = POINT OF BEGINNING
  - P.O.C. = POINT OF COMMENCEMENT
  - R. = RADIUS (RAD 11)
  - R.F. = RADIAL TO FRONT LOT LINE
  - R.R. = RADIAL TO REAR LOT LINE
  - R.M. = RIGHT OF WAY
  - U.E. = UTILITY EASEMENT
  - W.C. = WITNESS CORNER
  - Z.L.M.E. = ZERO LOT LINE MAINTENANCE EASEMENT
  - ⊙ = PERMANENT CONTROL POINT (PCP)
  - PCP #4380
  - = PERMANENT REFERENCE MONUMENT (PRM)
  - SET PRM #4380

PROFESSIONAL SURVEYORS AND MAPPERS

**ATLANTIC - CARIBBEAN MAPPING, INC.**

3062 JOG ROAD - GREENACRES, FLORIDA 33487  
 (561) 964-7884; FAX (561) 964-1969

SUBDIVISION # JONES  
 BOOK 78 PAGE 167  
 FLOOD ZONE B FLOOD MAP #2014  
 QUAD # 50 ZONING PDD  
 SE ZIP CODE 33437  
 P.U.D. NAME JONES